

# Hunt for minibeasts!



**Slug**

No legs, usual colours:  
black, brown, or pale grey



**Snail**

No legs, has a shell



**Worm**

No legs, usually pink or  
grey



**Beetle**

6 legs



**Earwig**

6 legs, pincers at the  
back



**Spider**

8 legs, two body  
segments



Tell us what you  
spot in your  
garden!



**Harvestman**

8 legs, one body  
segment



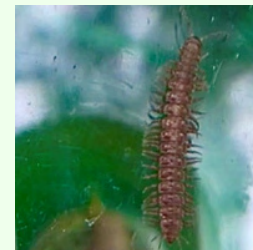
**Woodlouse**

14 legs, have hard grey  
'armour'



**Centipede**

Lots of legs, two legs per  
body segment



**Millipede**

Lots of legs, four legs  
per body segment